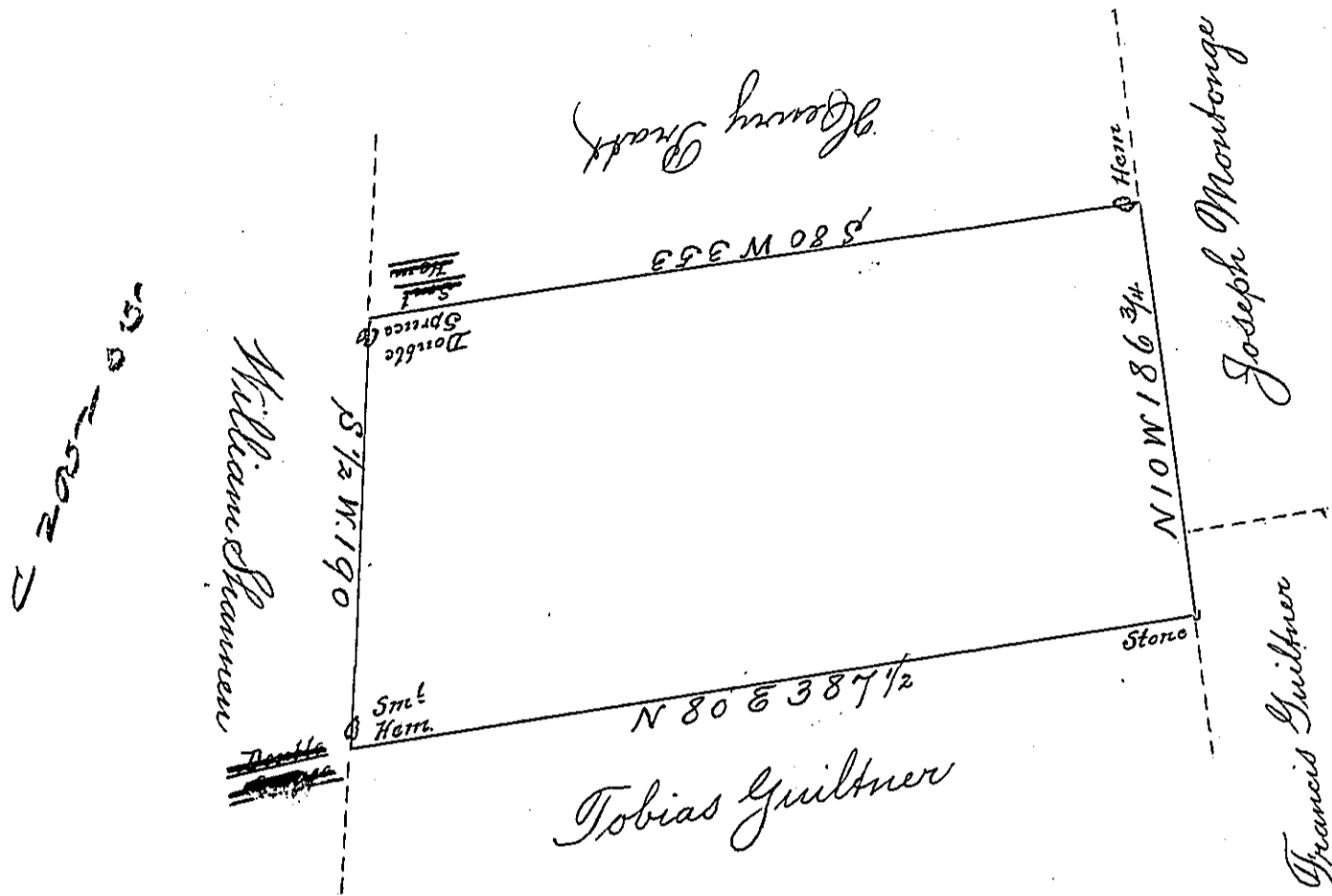


C 173-288



By Virtue of a Warrant dated the 25<sup>th</sup> February 1793  
 Surveyed the 17<sup>th</sup> September 1793 to Frederick W. Starman  
 the above described Tract of Land Situate on a small branch  
 of Lehi called Trout Creek in the County of Northampton  
 Containing four hundred and seven Acres one hundred  
 and twenty perches and the Allowance of Six p Cent  $\frac{1}{2}$ <sup>u</sup>  
 p Geo Palmer  
 To Daniel Brodhead Esquire }  
 Surveyor General }

IN TESTIMONY that the above is a copy of the original remaining on file in  
 the Department of Internal Affairs of Pennsylvania, made  
 conformably to an Act of Assembly approved the 16th day of  
 February, 1833, I have hereunto set my Hand and caused  
 the Seal of said Department to be affixed at Harrisburg,  
 this fourth day of November 1902

*James W. Fatta*  
 Secretary of Internal Affairs.